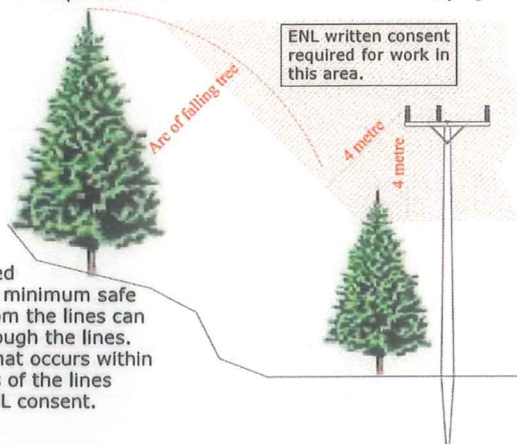


# TREES NEAR OVERHEAD POWER LINES ELECTRICITY (HAZARD FROM TREES) REGULATIONS 2003



Trees in contact with or close to live power lines are a safety hazard, with the potential for causing damage to power lines, injury or death by electrocution. When conditions are dry, trees near power lines can cause fires. Trees can also damage power lines and equipment during high winds, causing power failures and danger to the public. Where a tree has come into contact with an overhead line or constitutes a serious hazard to the conductor, ENL may cut or trim the tree as required to remove the hazard without notifying the tree owner.



Trees located outside the minimum safe distance from the lines can still fall through the lines. Any work that occurs within four metres of the lines requires ENL consent.

### First Cut

Where a tree has been inspected and found to be within the Growth Limit Zone, ENL will notify the owner by mail advising the first cut/trim will be carried out free of charge. The owner is provided with a form to complete giving permission for ENL contractor to cut/trim.

### Offences under the Tree Regulations

If ENL becomes aware of a tree encroaching the Growth Limit Zone, it will issue a Hazard Warning Notice to the tree owner stating the tree must be cut or trimmed. A tree owner who fails to arrange for a qualified tree contractor to (or fails to allow ENL to) cut or trim the tree, or fails to advise ENL of the time and location of the cut or trim of the tree may be liable on summary conviction to a fine not exceeding \$10,000. If the offence continues, a further fine not exceeding \$500 may be levied for each day or part of a day during which the offence continues. A tree owner may also be liable for costs associated with damage to ENL's network caused by their trees.

### Dangers of cutting trees near power lines

You may be liable for prosecution under the Electricity (Safety) Regulations if you carry out work yourself inside the 4m radius around power lines. Touching a live power line or a tree close to the line can cause serious injury or death by electrocution. Arrange for a qualified and approved contractor to cut or trim trees growing near power lines.

**Planting new trees** near overhead electric lines. Serious consideration should be given to species selection and placement of trees on your property to avoid future conflict between the tree and the conductor.

**Private Overhead Service Mains** connect some customers to our network through high voltage and low voltage overhead electric lines. The owner is responsible for the control of trees in proximity of the private service main. It is recommended that tree control work near a conductor is **only** carried out by an ENL approved contractor for safety reasons. A list of contractors approved for work near ENL lines is shown at the top of this notice.

### More Information:

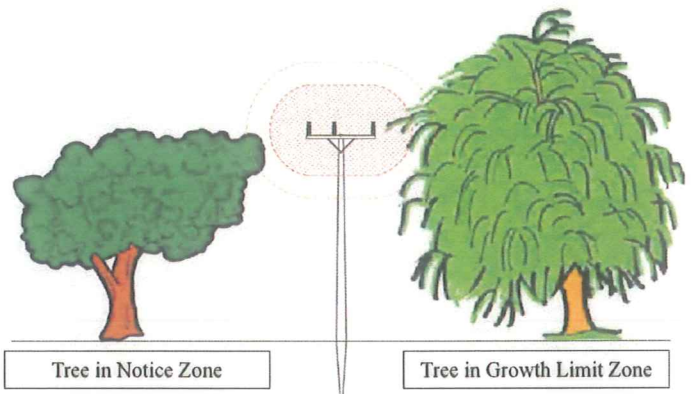
This notice provides information as required by the Electricity (Hazards from Trees) Regulations 2003. More detailed information is available on our website [www.eastland.co.nz](http://www.eastland.co.nz) or you can call 869 0700 or email [info@eastland.co.nz](mailto:info@eastland.co.nz)

### Eastland Network Ltd Approved Tree Contractors

<b>ArborCare Tree Company Ltd</b>		
Mark Randall	Ph 06 862 5785	Mobile 0274 527 804
<b>Eastland Treecare Ltd</b>		
Hop Sadlier	Ph 06 862 5833	Mobile 027 203 2642
<b>Roberts Tree Surgeons</b>		
Paul Roberts	Ph 06 868 6463	Mobile 027 249 6870
<b>Eastech</b>		
Tony Leggett	Ph 06 869 1640	Mobile 021 760 032

### Notice Zone and Growth Limit Zone

The Tree Regulations state how close trees may come to power lines before trimming is required. The Growth Limit Zone is the space around the power line in any direction where trees must not encroach, even in stormy conditions. The Notice Zone is 1m beyond the Growth Limit Zone.



OVERHEAD LINE	NOTICE ZONE	GROWTH LIMIT ZONE
<b>High Voltage</b>		
50kV	4.0 metres	3.0 metres
33kV	3.5 metres	2.5 metres
11kV	2.6 metres	1.6 metres
Service Main	2.6 metres	1.6 metres
<b>Low Voltage</b>		
400V/230V	1.5 metres	0.5 metres
Service Main	1.5 metres	0.5 metres

### Shelterbelts

If you have a shelterbelt on your property, continue to trim as you have in the past. Make arrangements with ENL or other approved contractors to cut or trim the shelterbelt to ensure that the trees do not encroach the Notice Zone.